

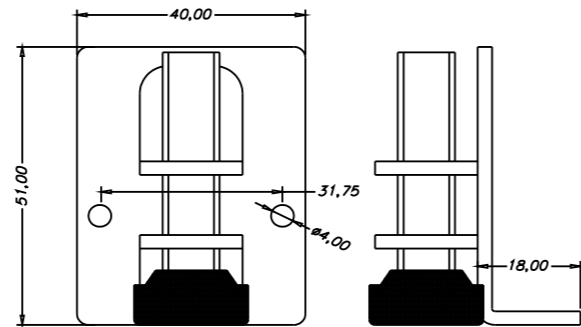
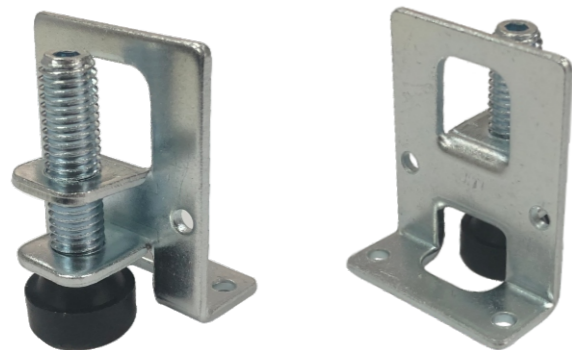
4

Cabinet Accessories Series 櫥柜脚系列

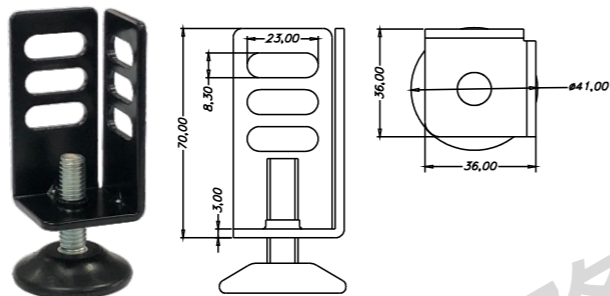
- 1 **Steel Cabinet Accessories**
金属櫥柜脚 **P 87**
- 2 **Plastic Kitchen Cabinet Accessories**
塑料櫥柜配件 **P 90**



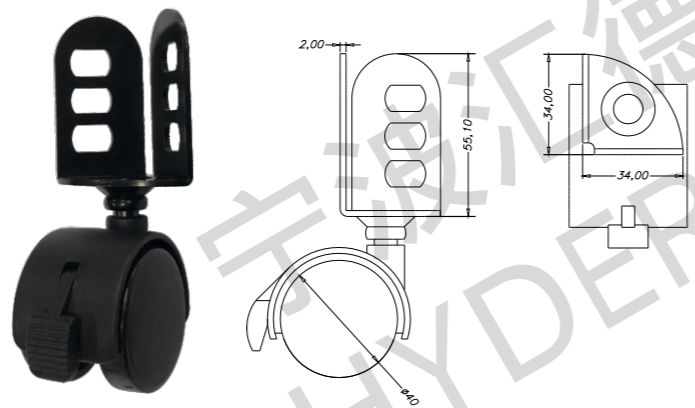
Part No.	Stem thread	Material
280210	M10X40mm(3/8"-16X1.5")	Plastic/Steel



Part No.	Stem thread	Material
280190	M10x35mm(3/8"-16x1.5")	Plastic/Steel



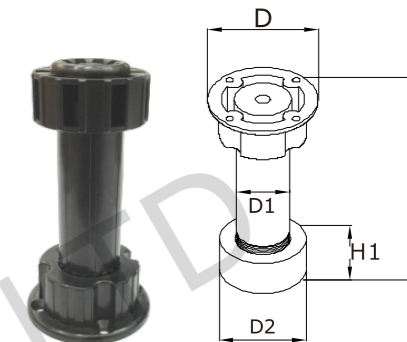
Part No.	Material
280200	Plastic/Steel



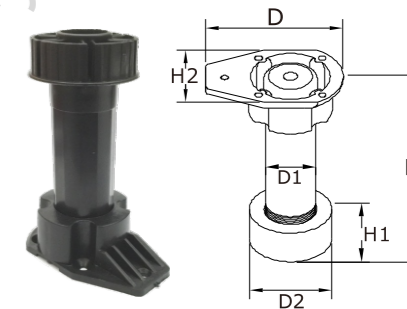
2 Plastic Kitchen Cabinet Accessories

塑料厨柜配件

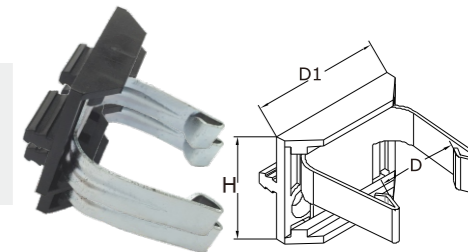
Part No.	H	D	D1	D2	H1	Material
280060	113-152mm	60mm	28mm	48mm	24mm	ABS



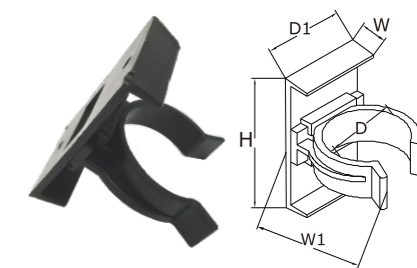
Part No.	H	D	D1	D2	H1	H2	Material
280070	113-152mm	77mm	28mm	47mm	19mm	49mm	ABS



Part No.	D	D1	H	Material
280080	23mm	38mm	31mm	ABS/Iron



Part No.	W	W1	D	D1	H	Material
280090	10mm	40mm	27mm	29mm	49mm	ABS



Part No.	L	H	Material
280150	50mm	19mm	PP

