

5

Swivel Glide Series 学校家具脚系列

1 **Round School Chair Glide With Ferrule**
带罩圆管万向脚 P 101

2 **Round School Chair Glide Without Ferrule**
不带罩圆管万向脚 P 103

3 **Square School Chair Glide With Ferrule**
带罩方管万向脚 P 103

4 **Square School Chair Glide Without Ferrule**
不带罩方管万向脚 P 103

5 **Ellipse School Chair Glide Without Ferrule**
不带罩椭圆万向脚 P 104

6 **School Chair Glide With Plastic Ferrule**
塑料罩万向脚 P 104

7 **Base Caps For Swivel Glide**
万向脚脚套 P 106



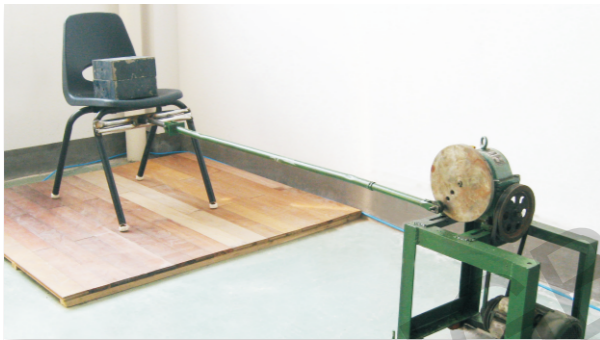
Swivel Glides 万向脚系列介绍

- HYDERON Company swivel glides are suitable for metal furniture including round tube, square tube, out-of-shape tube. The swivel glides have the function of adjusting the direction. Our products are easy to be used and can promote the quality and level of the furniture.

The normal swivel glides produced by Ningbo Hyderon are suitable for the tube with thickness specification 16GA-18GA(1.2-1.5mm) and can bear the pull test with 300 pounds(137kg). If have the specific request, such as 13GA, need to point out. We have 8 inspection projects to guarantee the quality of this series of products. We not only have the various kinds of swivel glides, but also have many different kinds of the base to suit for different kinds of environment.

- 汇德隆生产的万向脚产品适用钢质家具，不管是圆管、方管、异形管，起到万向，微调之功能，使用方便、快捷，提升产品品质与档次。
常规的万向脚系列产品，适合配壁厚为16GA-18GA (1.2-1.5mm) 的钢管。有特殊情况需要重点说明，(例如：13GA)，可以承受300磅(137KG)拉力测试。整个系列产品分解成八个项目的检测来确保品质。汇德隆万向脚系列产品不仅品种、规格齐全，并且“底座”更具特色，适用各种不同环境。

Testing As Below Picture 测试条件(如下图)：

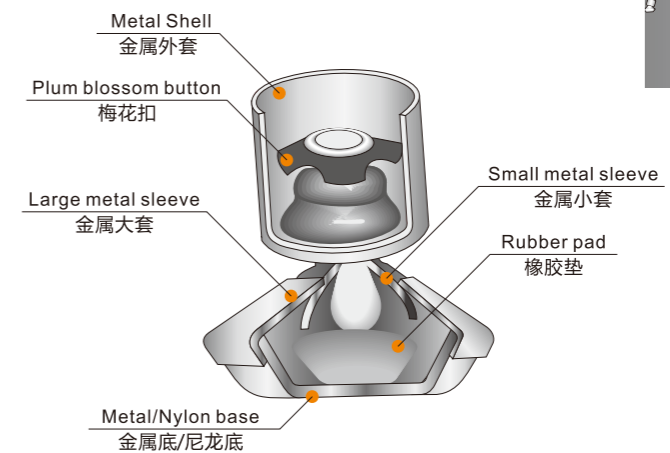


- Hardwood floor, loading weight on chair is 50kg.**
硬质地板, 椅子负载50千克, 往返一次作为计数标准
- Abrasion of plastic base refers to abrasion value.**
磨损的厚度作为磨耗量 (mm)

Base Options Of Swivel Glides 汇德隆万向脚底部说明*：

Base Material 底部材质	Picture 产品图片	Application 适合场地	Abrasion(mm) 磨耗量(mm)	Friction Coefficient 摩擦系数
Nylon 尼龙底		Carpet Wood Floor 地板、地毯	1mm/20 Thou. times 1mm/2万次	0.15-0.25
Steel 金属底		Carpet Outdoor 瓷砖、地毯	0.1mm/100 Thou. times 0.1mm/10万次	0.22-0.35
Felt 毛毡(化纤丝绵) (25mm/30mm)		Carpet Wood Floor 地板、瓷砖		
Teflon PTFE膜		Carpet Wood Floor Outdoor 地板、瓷砖、地毯	0.3mm/20 Thou. times 0.3mm/2万次	0.09
Anti-Skid Plastic (PU)硬		Wood Floor Stone Floor Ceramic Floor 地板、容易打滑的地面		0.15-0.25
Plastic Alloy 合金塑料		Carpet Wood Floor Outdoor 地板、瓷砖、地毯	0.12mm/150 Thou. times 0.12mm/15万次	0.10

Swivel Glides Structure Introduction 万向脚结构介绍：



1 Round School Chair Glide With Ferrule 带罩圆管万向脚

Part No.	Base Dia.	Tube O.D.	Metal Surface
100010	25mm	5/8"	Nickel Plated
100011		3/4"	Nickel Plated
100012	31mm	7/8"	Nickel Plated
100013		1"	Nickel Plated
100014		1-1/8"	Nickel Plated

Part No.	Base Dia.	Tube O.D.	Tube	Metal Surface
100030	25mm	5/8"	16/18GA	Nickel Plated
100031		3/4"	16/18GA	Nickel Plated
100032	31mm	7/8"	16/18GA	Nickel Plated
100033		1"	16/18GA	Nickel Plated
100034		1-1/8"	16/18GA	Nickel Plated
100035		1-1/4"	16/18GA	Nickel Plated

Part No.	Base Dia.	Tube O.D.	Tube	Metal Surface
100020	25mm 31mm	5/8"	16/18GA	Nickel Plated

Part No.	Base Dia.	Tube O.D.	Tube	Metal Surface
100050	25mm	3/4"	16/18GA	Nickel Plated
100051		7/8"	16/18GA	Nickel Plated
100052	31mm	1"	16/18GA	Nickel Plated
100053		1-1/8"	16/18GA	Nickel Plated

Part No.	Base Dia.	Tube O.D.	Tube	Metal Surface
100160	25mm	1"	16/18GA	Nickel Plated
100161	31mm	1-1/8"	16/18GA	Nickel Plated



Part No.	Base Dia.	Tube O.D.	Tube	Metal Surface
100190	25mm	5/8"	16/18GA	Nickel Plated
100191		3/4"	16/18GA	Nickel Plated
100192	31mm	7/8"	16/18GA	Nickel Plated
100193		1"	16/18GA	Nickel Plated
100194		1-1/8"	16/18GA	Nickel Plated

Part No.	Base Dia.	Tube O.D.	Tube	Metal Surface
100040	25mm 31mm	3/4"	16/18GA	Nickel Plated



- **Standard Type:**
The ferrule is straight. There will be a gap between the tube and glide.
- **常规款万向脚**
常规款万向脚口面处是直面，使用装配后与钢管贴合处有明显缝隙。



- **Swedged Type:**
The ferrule is swedged. After assemble, no gap between the tube and glide.
- **缩口款万向脚**
缩口款万向脚口面处是向内收缩的，使用装配后与钢管贴合处无任何缝隙。

Bottom diameter comparison:
底部直径对比：



2 Round School Chair Glide Without Ferrule 不帶罩圓管萬向腳

Part No.	Base Dia.	Tube O.D.	Tube	Metal Surface
100060	25mm	5/8"	16/18GA	Nickel Plated
100061		3/4"	16/18GA	Nickel Plated
100062		7/8"	16/18GA	Nickel Plated
100063		1"	16/18GA	Nickel Plated
100064		1-1/8"	16/18GA	Nickel Plated
100065		30mm	16/18GA	Nickel Plated
100066	31mm	1-1/4"	16/18GA	Nickel Plated

Part No.	Base Dia.	Tube O.D.	Tube	Metal Surface
100180	25mm	5/8"	16/18GA	Nickel Plated
100181		3/4"	16/18GA	Nickel Plated
100182		7/8"	16/18GA	Nickel Plated
100183		1"	16/18GA	Nickel Plated
100184		1-1/8"	16/18GA	Nickel Plated



3 Square School Chair Glide With Ferrule 帶罩方管萬向腳

Part No.	Base Dia.	Tube O.D.	Tube	Metal Surface
100280	25mm	7/8"x7/8"	16/18GA	Nickel Plated
100281	31mm	1"x1"	16/18GA	Nickel Plated

Part No.	Base Dia.	Tube O.D.	Tube	Metal Surface
100290	25mm	7/8"x7/8"	16/18GA	Nickel Plated
100291	31mm	1"x1"	16/18GA	Nickel Plated



4 Square School Chair Glide Without Ferrule 不帶罩方管萬向腳

Part No.	Base Dia.	Tube O.D.	Tube	Metal Surface
100070	25mm	5/8"x5/8"	16/18GA	Nickel Plated
100071		3/4"x3/4"	16/18GA	Nickel Plated
100072		7/8"x7/8"	16/18GA	Nickel Plated
100073		1"x1"	16/18GA	Nickel Plated
100074		1-1/8"x1-1/8"	16/18GA	Nickel Plated



5 Ellipse School Chair Glide Without Ferrule 不帶罩橢圓管萬向腳

Part No.	Base Dia.	Tube Size	Tube	Metal Surface
100430	25/30mm	40x20mm	2.5mm	Nickel Plated



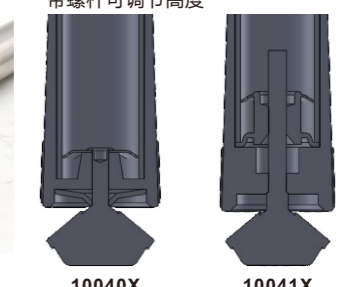
6 School Chair Glide With Plastic Ferrule 塑料罩萬向腳

Part No.	Base Dia.	Tube O.D.	Tube	Colour
100400	25mm	1"	16/18GA	
100401	31mm	1-1/8"	16/18GA	

Part No.	Base Dia.	Tube O.D.	Tube	Colour
100410	25mm	1"	16/18GA	
100411	31mm	1-1/8"	16/18GA	



Adjustable height with screw.
帶螺桿可調節高度



Swivel Glides Series

Swivel Glides Series



100420



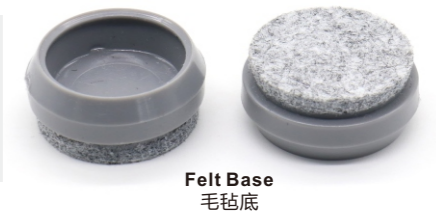
100421



7 Base Caps For Swivel Glide 万向脚脚套

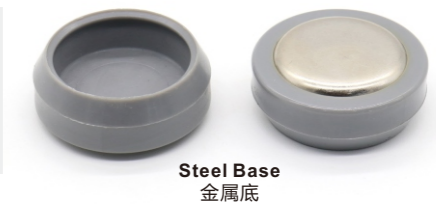


Part No.	Dia.	H	Color
140120	1-3/8"	13.5mm	<input type="checkbox"/> <input type="checkbox"/> <input checked="" type="checkbox"/> <input type="checkbox"/>
140121	1-3/8"	16mm	<input type="checkbox"/> <input type="checkbox"/> <input checked="" type="checkbox"/> <input type="checkbox"/>



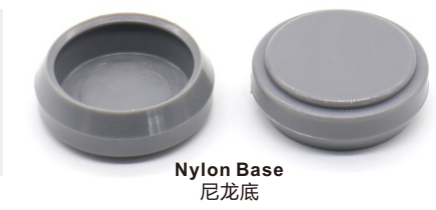
Felt Base
毛毡底

Part No.	Dia.	H	Color
140122	1-3/8"	13.5mm	<input checked="" type="checkbox"/> <input type="checkbox"/> <input type="checkbox"/> <input type="checkbox"/>
140123	1-3/8"	16mm	<input checked="" type="checkbox"/> <input type="checkbox"/> <input type="checkbox"/> <input type="checkbox"/>



Steel Base
金属底

Part No.	Dia.	H	Color
140124	1-3/8"	13.5mm	<input type="checkbox"/> <input type="checkbox"/> <input checked="" type="checkbox"/> <input type="checkbox"/>
140125	1-3/8"	16mm	<input type="checkbox"/> <input type="checkbox"/> <input checked="" type="checkbox"/> <input type="checkbox"/>



Nylon Base
尼龙底

Part No.	Dia.	H	Color
140126	1-3/8"	13.5mm	<input checked="" type="checkbox"/> <input type="checkbox"/> <input type="checkbox"/> <input type="checkbox"/>
140127	1-3/8"	16mm	<input checked="" type="checkbox"/> <input type="checkbox"/> <input type="checkbox"/> <input type="checkbox"/>



Anti-Slip Base
防滑底

Part No.	Dia.	H	Color
140130	1-1/4"	15mm	<input checked="" type="checkbox"/> <input type="checkbox"/> <input type="checkbox"/>
140131	1-3/8"	15mm	<input checked="" type="checkbox"/> <input type="checkbox"/> <input type="checkbox"/>

