

8

Tube Plug Series 管塞系列

1 Swivel Plastic Plug
万向塑料管塞 P 125

2 Plastic Plug With Felt
毛毡塑料管塞 P 126

3 Shrapnel Tube Plug
弹片管塞 P 126

4 Round Plastic Plug
圆形塑料管塞 P 127

5 Square Plastic Plug
方形塑料管塞 P 129

6 Transparent Inserts
牙塞/透明堵塞 P 131

7 Metal Hole Cover
金属孔塞 P 132

8 Other Plastic Plug
异形管塞 P 132



1 Swivel Plastic Plug 万向塑料管塞

Patent Product
专利产品

Part No.	Base Dia.	Tube O.D.	Tube	Angle	Material	Colour
241110	25mm	19mm(3/4")	1.2-1.5mm	0-22°	Nylon	●
241111	25mm	22mm(7/8")	1.2-1.5mm	0-22°	Nylon	●
241112	25mm	25mm(1")	1.2-1.5mm	0-22°	Nylon	●
241113	25mm	1-1/8"	1.2-1.5mm	0-22°	Nylon	●
241114	30mm	19mm(3/4")	1.2-1.5mm	0-22°	Nylon	●
241115	30mm	22mm(7/8")	1.2-1.5mm	0-22°	Nylon	●
241116	30mm	25mm(1")	1.2-1.5mm	0-22°	Nylon	●
241117	30mm	1-1/8"	1.2-1.5mm	0-22°	Nylon	●
241118	35mm	19mm(3/4")	1.2-1.5mm	0-22°	Nylon	●
241119	35mm	22mm(7/8")	1.2-1.5mm	0-22°	Nylon	●
241120	35mm	25mm(1")	1.2-1.5mm	0-22°	Nylon	●
241121	35mm	1-1/8"	1.2-1.5mm	0-22°	Nylon	●



Part No.	Base Dia.	Tube O.D.	Material	Colour
100230	30mm	20mm	Nylon	●
100231	30mm	22mm	Nylon	●
100232	30mm	25mm	Nylon	●



The base can be replaced at the bottom.
此款管塞可换底



Part No.	D	H	h	Wall thickness	Colour
241090	16mm	12mm	8mm	1-1.5mm	● ○

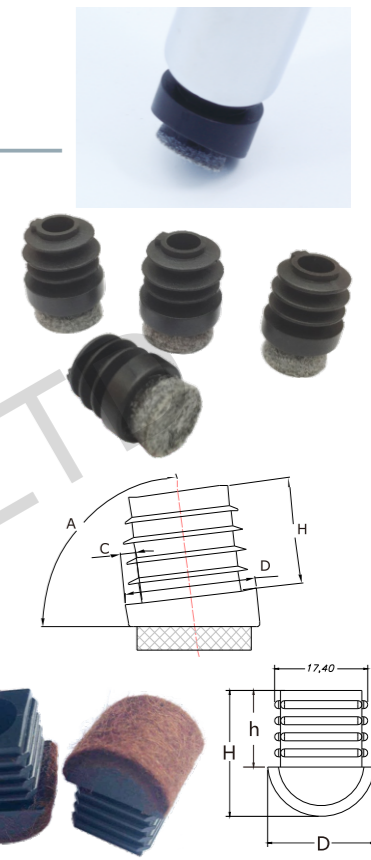
Part No.	D	H	h	Wall thickness	Colour
241070	1"	12.5mm	11.3mm	1-1.2mm	● ○ ●

Part No.	D	H	h	Wall thickness	Colour
241080	1"x1"	18mm	20mm	1-1.2mm	● ○



2 Plastic Plug With Felt 毛毡塑料管塞

Part No.	D	H	A	C	Colour
241490	14mm	12mm	90°	1.2-1.5mm	● ○
241690	5/8"(16mm)	12mm	90°	1.2-1.5mm	● ○
242290	7/8"(22mm)	23.5mm	90°	1.2-1.5mm	● ○
242276	7/8"(22mm)	23.5mm	76°	1.2-1.5mm	● ○
242270	7/8"(22mm)	23.5mm	70°	1.2-1.5mm	● ○
242560	1"(25.4mm)	23.5mm	60°	1.2-1.5mm	● ○
242578	1"(25.4mm)	23.5mm	78°	1.2-1.5mm	● ○
242860	1-1/8"(28.6mm)	23.5mm	60°	1.2-1.5mm	● ○
242883	1-1/8"(28.6mm)	23.5mm	83°	1.2-1.5mm	● ○



Part No.	Size	D	H	h	Colour
241742	17.4x17.4mm	20mm	23.5mm	14.3mm	● ○

243220

Dia. : 32mm

H : 22mm

Color: ● ○

243221

Dia. : 32mm

H : 22mm

Color: ● ○

242816

Dia. : 28mm

H : 16mm

Color: ● ○

3 Shrapnel Tube Plug 弹片管塞

Part No.	Tube O.D.	Tube	Material	Colour
241000	Ø 25.4mm	2mm	PP+Steel	●
241001	Ø 28mm	2mm	PP+Steel	●
241002	Ø 32mm	2mm	PP+Steel	●

Part No.	Tube O.D.	Tube	Material	Colour
241010	32x32mm	2mm	PP+Steel	●

Part No.	Tube O.D.	Tube	Material	Colour
241020	32x32mm	1.2-1.5mm	PP+Steel	●
241021	38x38mm	1.2-1.5mm	PP+Steel	●

Part No.	Tube O.D.	Tube	Material	Colour
241030	Ø 32mm	1.2-1.5mm	PP+Steel	●



Tube Plug Series

Tube Plug Series

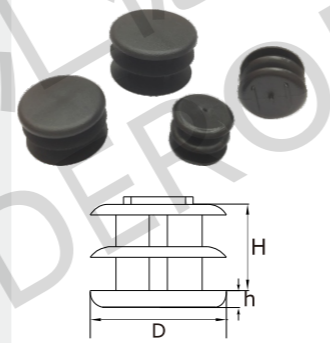
4 Round Plastic Plug

圓形塑料管塞

Part No.	D	H	h	Wall thickness	Colour
241805	18mm	11.6mm	5mm	0.5-1mm	● ○
242005	20mm	11.6mm	5mm	0.5-1mm	● ○
242205	22mm	11.6mm	5mm	0.5-1mm	● ○
242505	25mm	11.6mm	5mm	0.5-1mm	● ○
242705	27mm	12mm	3.6mm	0.5-1mm	● ○
242805	28mm	11.6mm	5mm	0.5-1mm	● ○
243005	30mm	11.6mm	5mm	0.5-1mm	● ○
243205	32mm	13.6mm	5mm	0.5-1mm	● ○
243405	34mm	11.7mm	4.9mm	0.5-1mm	● ○
243505	35mm	11.7mm	4.9mm	0.5-1mm	● ○
243805	38mm	11.5mm	4.8mm	0.5-1mm	● ○
244005	40mm	11.8mm	4.9mm	0.5-1mm	● ○
244205	42mm	11.6mm	5mm	0.5-1mm	● ○
244805	48mm	11.5mm	4.8mm	0.5-1mm	● ○
245005	50mm	11.7mm	4.9mm	0.5-1mm	● ○
246005	60mm	17.5mm	4.9mm	0.5-1mm	● ○



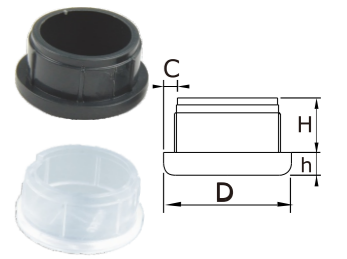
Part No.	D	H	h	Wall thickness	Colour
241603	5/8"	11mm	3mm	0.8-1.5mm	● ○
241903	3/4"	12mm	3mm	0.8-1.5mm	● ○
242203	7/8"	12mm	3mm	0.8-1.5mm	● ○
242503	1"	12.5mm	3mm	1-2.5mm	● ○
242803	1-1/8"	16mm	3mm	1-2.5mm	● ○
243203	1-1/4"	16mm	3mm	1-3mm	● ○
243803	1-1/2"	16mm	3mm	1-3mm	● ○



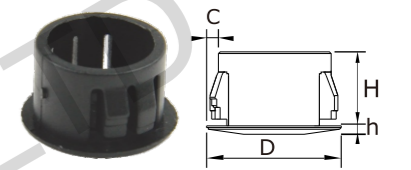
Part No.	D	H	h	C	Colour
240039	19mm	10mm	3.4mm	2.1-2.5mm	● ○
240038	18.5mm	13mm	3mm	0.5-0.8mm	● ○
240037	19mm	12.5mm	4mm	1.2-1.5mm	● ○
240036	22mm	12mm	4mm	1.2-1.5mm	● ○
240035	25mm	13mm	4mm	1.2-1.5mm	● ○
240035-1	22mm	14mm	7.3mm	1.2-1.5mm	● ○
240034	23mm	9mm	2.5mm	1-1.2mm	● ○



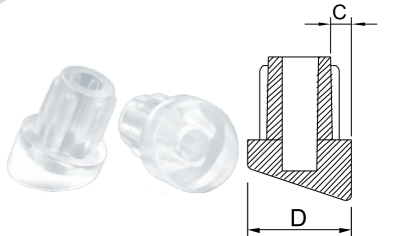
Part No.	D	H	h	C	Colour
240033	22mm	9.8mm	4mm	2.2mm	● ○
240032	31.2mm	11.1mm	5mm	2.2mm	● ○
240031	31.5mm	11mm	4.5mm	1.2mm	● ○
240030	38.1mm	9.4mm	4mm	1mm	● ○



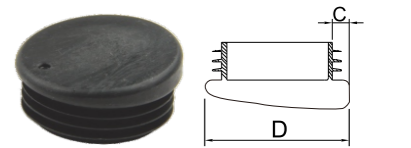
Part No.	D	H	h	C	Colour
240016-1	15.8mm	9.3mm	1.1mm	2mm	● ○
240016-2	12mm	9mm	1.5mm	1.2mm	● ○



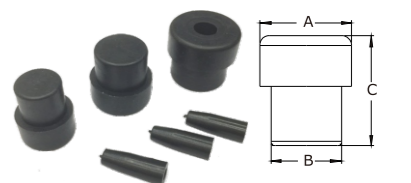
Part No.	D	C	Angle	Colour
240063	20mm	3.9mm	18°	○
240063-1	21.4mm	3mm	10°	○
240063-2	21.4mm	3mm	23°	○



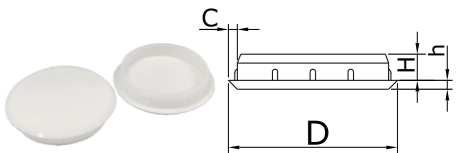
Part No.	D	C	Angle	Colour
240056-2	47.6mm	5.4mm	5°	● ○



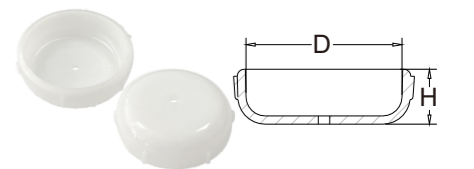
Part No.	A	B	C	Colour
120220	17.5mm	13.5mm	21.5mm	● ○
120221	21.5mm	17.5mm	21.5mm	● ○
120222	25.5mm	21.5mm	21.5mm	● ○



Part No.	D	H	h	C	Colour
243858	38mm	5.8mm	2mm	1.8mm	○
243058	30mm	5.8mm	2mm	1.8mm	○



Part No.	OD	ID	H	Colour
241100	32mm	29.5mm	12mm	● ○
241101	38mm	34.5mm	12mm	● ○



Part No.	OD	ID	H	Colour
241130	38mm(1-1/2")	33mm	15mm	● ○



5 Square Plastic Plug

方形塑料管塞

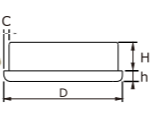
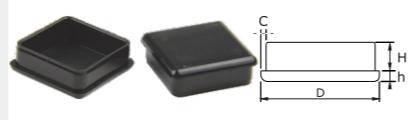
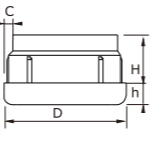
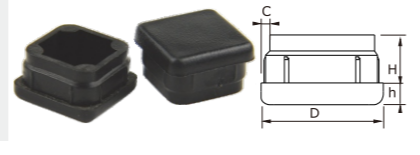
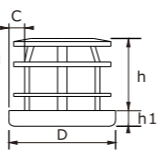
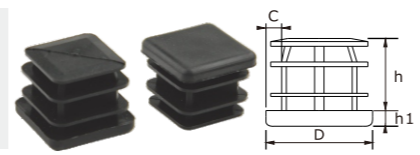
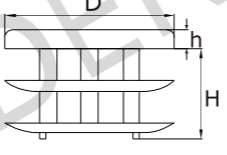
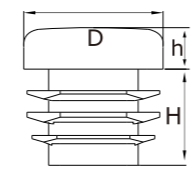
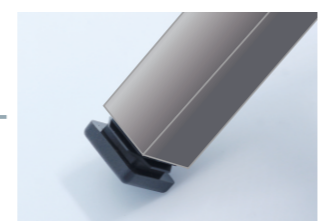
Part No.	D	H	h	Wall thickness	Colour
241313	13x13mm	11.6mm	5mm	0.5-1mm	● ○
241717	17x17mm	11.6mm	5mm	0.5-1mm	● ○
242020	20x20mm	11.5mm	4.5mm	0.5-1mm	● ○
242222	22x22mm	11.6mm	5mm	0.5-1mm	● ○
240050	25x25mm	11mm	4mm	0.5-1mm	● ○
242828	28x28mm	11.6mm	5mm	0.5-1mm	● ○
243030	30x30mm	12.8mm	4.8mm	0.5-1mm	● ○
243535	35x35mm	13.5mm	5.1mm	0.5-1mm	● ○
243737	37x37mm	13.6mm	5mm	0.5-1mm	● ○
244040	40x40mm	14.4mm	4.8mm	0.5-1mm	● ○
244545	45x45mm	14.5mm	5mm	0.5-1mm	● ○
245050	50x50mm	14.3mm	5mm	0.5-1mm	● ○
246060	60x60mm	20.6mm	5.3mm	0.5-1mm	● ○
247070	70x70mm	16.4mm	6mm	0.5-1mm	● ○
248080	80x80mm	21mm	6.3mm	0.5-1mm	● ○
241010	100x100mm	21mm	6.3mm	0.5-1mm	● ○

Part No.	D	H	h	Wall thickness	Colour
241616	5/8"x5/8"	11mm	3mm	0.8-1.5mm	● ○
241919	3/4"x3/4"	12mm	3mm	0.8-1.5mm	● ○
242220	7/8"x7/8"	12mm	3mm	0.8-1.5mm	● ○
242525	1"x1"	12.5mm	3mm	1-2.5mm	● ○
242820	1-1/8"x1-1/8"	16mm	3mm	1-2.5mm	● ○
243232	1-1/4"x1-1/4"	16mm	3mm	1-3mm	● ○
243838	1-1/2"x1-1/2"	16mm	3mm	1-3mm	● ○

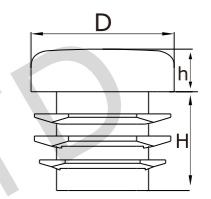
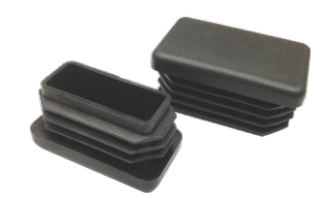
Part No.	D	H	h	Wall thickness	Colour
240051	25x25mm	17.2mm	3.8mm	1.2-1.5mm	● ○

Part No.	D	H	h	Wall thickness	Colour
240052	22x22mm	8.7mm	4mm	0.8mm	● ○

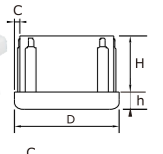
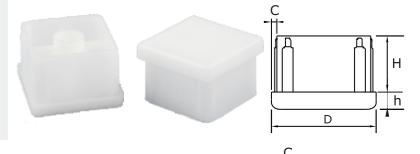
Part No.	D	H	h	Wall thickness	Colour
240045	38x38mm	9.4mm	3.3mm	1.3mm	● ○



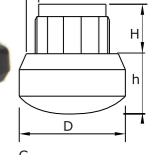
Part No.	D	H	h	Wall thickness	Colour
243015	30x15mm	11.5mm	5mm	0.5-1mm	● ○
243020	30x20mm	11.7mm	5mm	0.5-1mm	● ○
243217	32x17mm	11.6mm	5mm	0.5-1mm	● ○
243724	37x24mm	12.6mm	5mm	0.5-1mm	● ○
244020	40x20mm	11.8mm	5mm	0.5-1mm	● ○
244025	40x25mm	11.8mm	5mm	0.5-1mm	● ○
244030	40x30mm	11.8mm	5mm	0.5-1mm	● ○
245020	50x20mm	15mm	4.8mm	0.5-1mm	● ○
245025	50x25mm	15mm	5mm	0.5-1mm	● ○
245030	50x30mm	15mm	5mm	0.5-1mm	● ○
245040	50x40mm	15mm	5mm	0.5-1mm	● ○
246030	60x30mm	15mm	5mm	0.5-1mm	● ○
246040	60x40mm	15mm	5mm	0.5-1mm	● ○



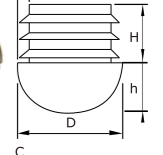
Part No.	D	H	h	Wall thickness	Colour
240044	38x38mm	20mm	6.2mm	1.8mm	● ○



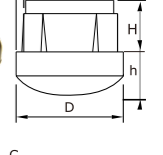
Part No.	D	H	h	C	Colour
240060	25.4x25.4mm	12mm	14.2mm	2mm	● ○



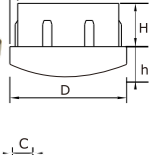
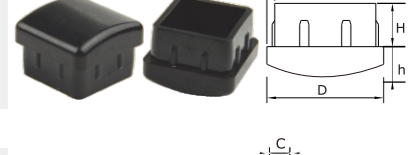
Part No.	D	H	h	C	Colour
240057	21.7x21.7mm	12mm	10mm	0.8-1mm	● ○



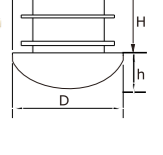
Part No.	D	H	h	C	Colour
240058	22.2x22.2mm	11mm	10mm	1.2mm	● ○



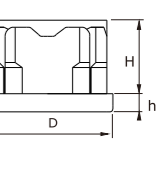
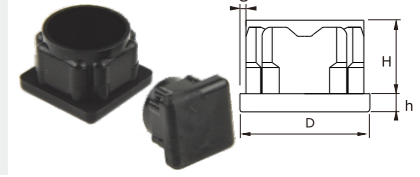
Part No.	D	H	h	C	Colour
240080	31.8x31.8mm	12mm	9.6mm	1.5mm	● ○



Part No.	D	H	h	C	Colour
240090	27.8x27.8mm	15.5mm	9.9mm	2.2mm	● ○



Part No.	D	H	h	Wall thickness	Colour
240049	19x19mm	10.7mm	4mm	1.2mm	● ○
240048	22x22mm	16.7mm	4mm	1.2mm	● ○
240047	25x25mm	14.3mm	4mm	1.2mm	● ○



Tube Plug Series

Tube Plug Series

6 Transparent Inserts 牙塞/透明堵塞

Part No.	D	H	h	d	Colour
240013-1	10.4mm	7mm	1.6mm	4.3mm	● ● ○
240013-2	12mm	12.2mm	1.5mm	7.1mm	● ● ○
240013-3	17.8mm	19mm	2mm	7.7mm	● ● ○
240013-4	18.8mm	29mm	3.2mm	7.7mm	● ● ○



Part No.	D	H	h	d	d1	Colour
240010-1	12.8mm	10mm	4.1mm	6.2mm	6.5mm	○
240010-2	15.5mm	10.5mm	7.2mm	6.2mm	6.6mm	○
240010-3	19mm	9.1mm	9.3mm	7.8mm	8mm	○



Part No.	D	H	h	d	d1	Colour
240011-1	12.7mm	10.5mm	4.4mm	6.3mm	6.6mm	○



Part No.	D	H	h	d	d1	Colour
240011-2	12.7mm	10.3mm	9.8mm	6.5mm	7.1mm	○
240011-3	12.7mm	9.1mm	11.2mm	5.6mm	6mm	○



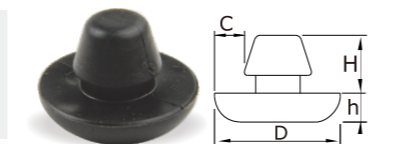
Part No.	D	H	d	Colour
120230	13.5mm	5mm	11.8mm	○
120231	30mm	5mm	11.8mm	○



Part No.	D	H	h	Colour
240016	15.8mm	7.5mm	8.6mm	● ○



Part No.	D	H	h	C	Colour
240023	34.5mm	16mm	7.8mm	9mm	● ○

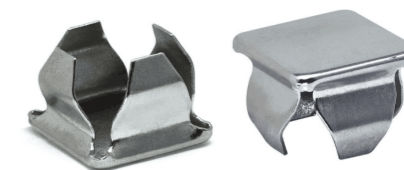


7 Metal Hole Cover 金属孔塞

Part No.	Tube O.D.	Tube	Material	Colour
241050	1/2"	16-18GA	65Mn	Nickel plated
241051	5/8"	16-18GA	65Mn	Nickel plated
241052	3/4"	16-18GA	65Mn	Nickel plated
241053	7/8"	16-18GA	65Mn	Nickel plated
241054	1"	16-18GA	65Mn	Nickel plated
241055	1-1/8"	16-18GA	65Mn	Nickel plated
241056	1-1/4"	16-18GA	65Mn	Nickel plated
241057	1-1/2"	16-18GA	65Mn	Nickel plated
241058	2"	16-18GA	65Mn	Nickel plated

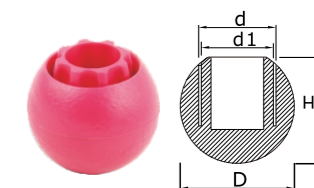


Part No.	Tube O.D.	Tube	Material	Colour
241060	3/4"x3/4"	16-18GA	65Mn	Nickel plated
241061	7/8"x7/8"	16-18GA	65Mn	Nickel plated
241062	1"x1"	16-18GA	65Mn	Nickel plated

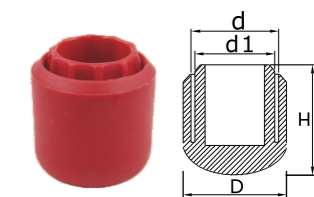


8 Other Plastic Plug 异形管塞

Part No.	D	H	d	d1	Colour
240085	38.1mm	35.9mm	25.4mm	23.2mm	● ○ ●



Part No.	D	H	d	d1	Colour
240070	52.8mm	54.5mm	44.5mm	42.5mm	● ● ○ ●
240072	47.3mm	53.2mm	38.1mm	36mm	● ● ○ ●



Part No.	L	W	H	Colour
190460	140.7mm	61.5mm	42mm	● ○



Part No.	L	W	H	Colour
190470	74.5mm	40mm	41mm	● ○

